

Floor Plans: 1905 Four Seasons Drive

Approx.: 2,256 sq. ft. above grade

Approx.: 3,426 sq. ft. including lower level

AB&A

AMY BRAY & ASSOCIATES



Main Level Approximately.: 1,135 sq. ft



AMY BRAY & ASSOCIATES

Amy Bray | Sales Representative, Sr. Vice President - Sales
Alexandria Wood | Sales Representative

c 416.802.5017

t 905.845.0024

amybrayassociates@sothebysrealty.ca

amybrayandassociates.ca

Sotheby's | Canada
INTERNATIONAL REALTY

For additional information,
visit amybrayandassociates.ca

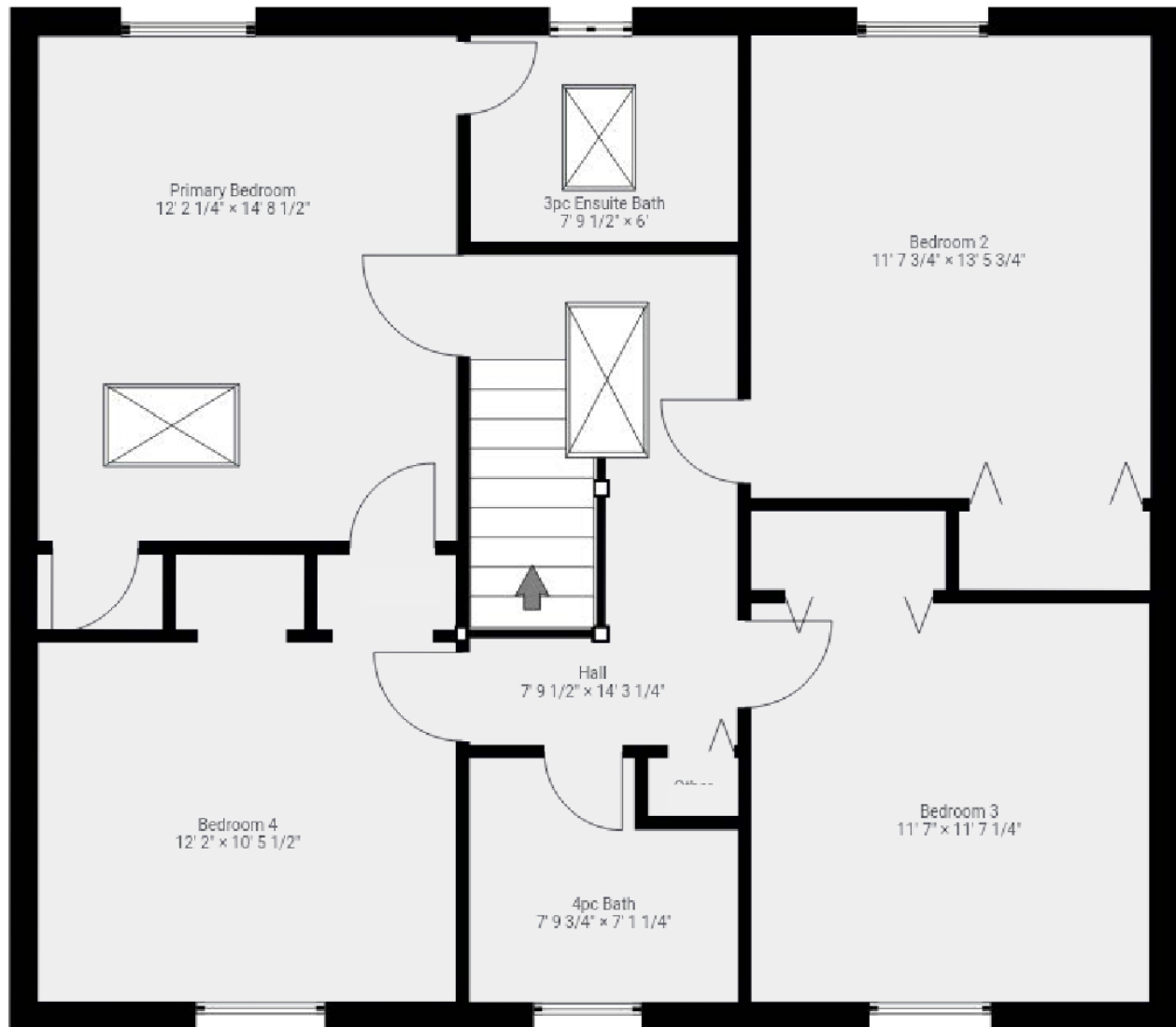
Floor Plans: 1905 Four Seasons Drive

Approx.: 2,256 sq. ft. above grade

Approx.: 3,426 sq. ft. including lower level

AB&A

AMY BRAY & ASSOCIATES



Second Level Approximately.: 911 sq. ft



AMY BRAY & ASSOCIATES

Amy Bray | Sales Representative, Sr. Vice President - Sales
Alexandria Wood | Sales Representative

c 416.802.5017

t 905.845.0024

amybrayassociates@sothebysrealty.ca

amybrayandassociates.ca

Sotheby's | Canada
INTERNATIONAL REALTY

For additional information,
visit amybrayandassociates.ca

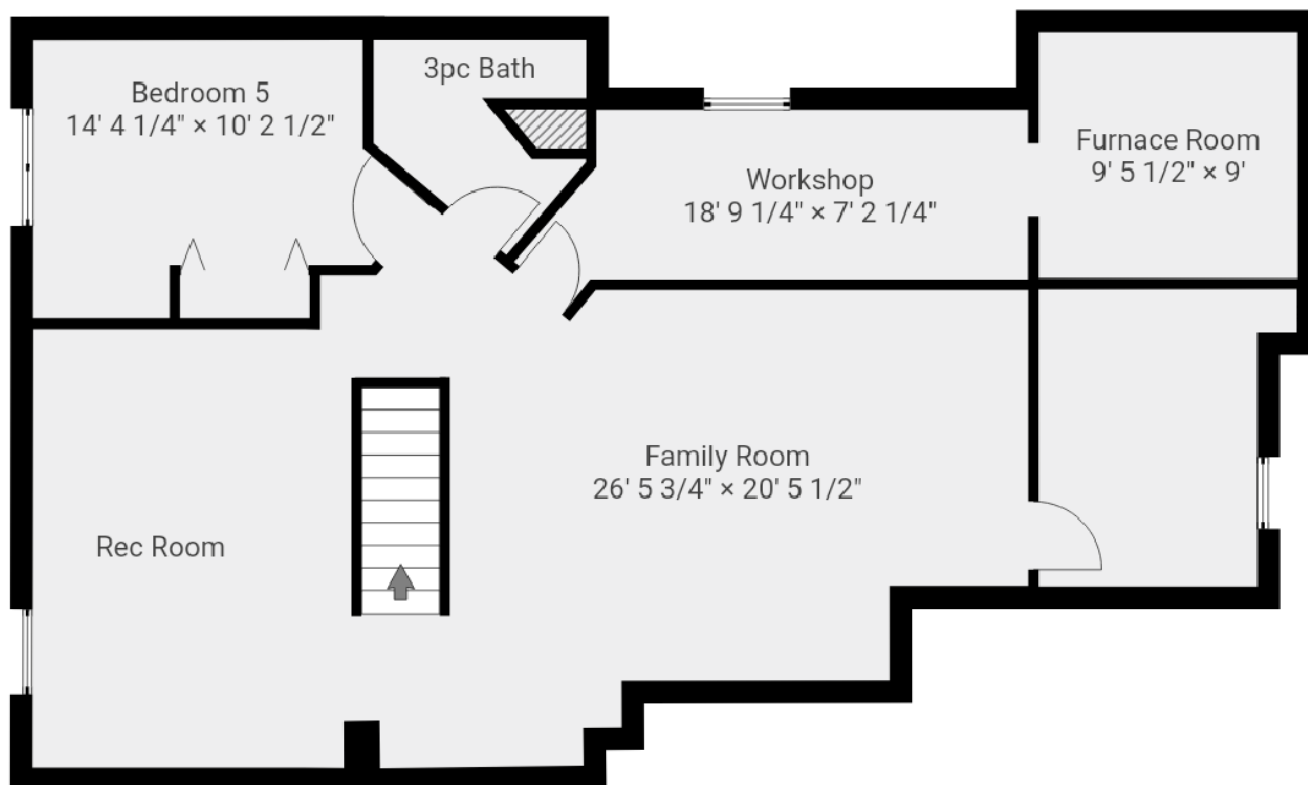
Floor Plans: 1905 Four Seasons Drive

Approx.: 2,256 sq. ft. above grade

Approx.: 3,426 sq. ft. including lower level

AB&A

AMY BRAY & ASSOCIATES



Lower Level Approximately.: 1,041 sq. ft



AMY BRAY & ASSOCIATES

Amy Bray | Sales Representative, Sr. Vice President - Sales
Alexandria Wood | Sales Representative

c 416.802.5017

t 905.845.0024

amybrayassociates@sothebysrealty.ca

amybrayandassociates.ca

Sotheby's | Canada
INTERNATIONAL REALTY

For additional information,
visit amybrayandassociates.ca